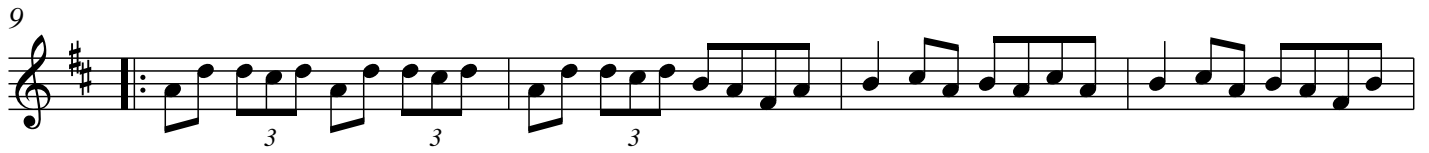


Reel 1-1 Concertina, The(Dmaj)



Reel 1-2 Coffey's(Brendan McMahon's)(Em)



Reel Set1 : The Concertina Reel/Coffey fs(Brendan McMahon fs)
(Tulla Ceili Band/A Celebration of 50 years)

Reel 2-1 George White's Favourite(Gmaj)

5

8

12

Reel 2-2 Sligo Maid (A Dorian)

Reels

Am G

5 Am G Am

9 Am G

13 Am G Am

Reel Set 2 : George White Favorite/Sligo Maid
(Kevin Croford/Gentle Breeze for Flute and Whistle)

Reel 3-1 Over The Moor To Maggie(Gma)

Musical notation for Reel 3-1, 'Over The Moor To Maggie' (Gma). The piece is in 4/4 time and G major. It consists of four staves of music. The first staff begins with a treble clef, a key signature of one sharp (F#), and a 4/4 time signature. It features a repeat sign followed by a triplet of eighth notes. The melody is characterized by a mix of eighth and sixteenth notes. The second staff starts at measure 7 and includes a fermata over a note. The third staff starts at measure 13 and contains another triplet. The fourth staff starts at measure 19 and ends with a double bar line.

Reel 3-2 Fred Finn's (Dmaj)

Musical notation for Reel 3-2, 'Fred Finn's' (Dmaj). The piece is in 4/4 time and D major. It consists of four staves of music. The first staff begins with a treble clef, a key signature of two sharps (F# and C#), and a 4/4 time signature. It starts with a repeat sign. The melody is primarily composed of eighth notes. The second staff starts at measure 5 and includes a fermata. The third staff starts at measure 9 and features a fermata over a note. The fourth staff starts at measure 13 and ends with a double bar line.

Reel 3-3 Hunter's House, The (Gmaj)

Musical notation for Reel 3-3, 'Hunter's House, The' (Gmaj). The piece is in 4/4 time and G major. It consists of four staves of music. The first staff begins with a treble clef, a key signature of one sharp (F#), and a 4/4 time signature. It starts with a repeat sign. The melody is primarily composed of eighth notes. The second staff starts at measure 5 and includes a fermata and two first/second endings. The third staff starts at measure 9 and features a fermata over a note. The fourth staff starts at measure 13 and ends with a double bar line.

Reel Set 3: Over the Moor to Maggie/Fred Finn fs/The Hunter fs House
(Various/Music at Matt Maolloy fs)

Reel 4-1 The Merry Blacksmith (Dmaj)

Musical notation for Reel 4-1 The Merry Blacksmith (Dmaj). The piece is in 4/4 time and D major. It consists of four staves of music. The first staff contains the first 4 measures. The second staff starts at measure 5 and includes first and second endings. The third staff starts at measure 9. The fourth staff starts at measure 13 and also includes first and second endings.

Reel 4-2 Limestone Rock, The (Gmaj)

Musical notation for Reel 4-2 Limestone Rock, The (Gmaj). The piece is in 4/4 time and G major. It consists of four staves of music. The first staff contains the first 4 measures. The second staff starts at measure 5. The third staff starts at measure 9. The fourth staff starts at measure 13.

Reel Set 4 : The Merry Blacksmith/The Limestone Rock
(Joe Derrane, Frankied Gavin/Ireland fs Harvest)

The Reel 5-1 New Copperplate

Musical notation for 'The Reel 5-1 New Copperplate'. It consists of four staves of music in 4/4 time, key of D major. The first staff starts with a repeat sign. The second staff begins at measure 5 and includes first and second endings. The third staff begins at measure 9. The fourth staff begins at measure 13 and also includes first and second endings.

The Reel 5-2 Old Copperplate

Musical notation for 'The Reel 5-2 Old Copperplate'. It consists of four staves of music in 4/4 time, key of D major. The first staff starts with a repeat sign. The second staff begins at measure 5 and includes first and second endings. The third staff begins at measure 9. The fourth staff begins at measure 13 and also includes first and second endings.

Reel Set 5 : The New Copperplate/The Old Copperplate
iAndrew MacNamara/The Best j

Reel 6-1 Silver Spear (D)

Reels

Musical notation for Reel 6-1 Silver Spear (D). The piece is in D major and common time (C). It consists of four staves of music. The first staff starts with a treble clef and a key signature of two sharps (F# and C#). The melody is written in eighth and sixteenth notes. Chord symbols are placed above the staff: D, G, D, G. The second staff starts at measure 5 and includes chord symbols D, G, G, D, Em, A. The third staff starts at measure 9 and includes chord symbols D, G, D, G. The fourth staff starts at measure 13 and includes chord symbols D, G, D, Em, A. The piece ends with a double bar line and repeat dots.

Reel 6-2 Mountain Road (D)

Reels

Musical notation for Reel 6-2 Mountain Road (D). The piece is in D major and common time (C). It consists of three staves of music. The first staff starts with a treble clef and a key signature of two sharps (F# and C#). The melody is written in eighth and sixteenth notes. Chord symbols are placed above the staff: D, D, A7, D, Bm, Em, A7. The second staff starts at measure 5 and includes chord symbols D, D, A7, D, A7, D. The third staff starts at measure 8 and includes chord symbols D, D, A, D, Bm, Em, A7. The piece ends with a double bar line and repeat dots.

Reel 6-3 The Maid Behind The Bar

Musical notation for Reel 6-3 The Maid Behind The Bar. The piece is in D major and 4/4 time. It consists of four staves of music. The first staff starts with a treble clef and a key signature of two sharps (F# and C#). The melody is written in eighth and sixteenth notes. The second staff starts at measure 5, the third at measure 8, and the fourth at measure 12. The piece ends with a double bar line and repeat dots.

Reel Set 6 : Silver Spear/Mountain Road/ The Maid Behind the Bar
(Tom Doherty/Take the Bull By the Horn)

Reel 7-1 Imelda Roland's(Edor)

Musical score for Reel 7-1 Imelda Roland's(Edor). The score is written in treble clef, 4/4 time, and G major. It consists of four staves of music. The first staff starts with a treble clef, a key signature of one sharp (F#), and a 4/4 time signature. The melody is composed of eighth and sixteenth notes. The second staff begins with a measure rest labeled '5'. The third staff begins with a measure rest labeled '9'. The fourth staff begins with a measure rest labeled '13'. The piece concludes with a double bar line and repeat dots.

Reel 7-2 Greig's Pipes(Gmaj)

Musical score for Reel 7-2 Greig's Pipes(Gmaj). The score is written in treble clef, 4/4 time, and G major. It consists of four staves of music. The first staff starts with a treble clef, a key signature of one sharp (F#), and a 4/4 time signature. It features a first ending bracket labeled '1' and a second ending bracket labeled '2'. The second staff begins with a measure rest labeled '5'. The third staff begins with a measure rest labeled '9'. The fourth staff begins with a measure rest labeled '13' and includes a triplet of eighth notes marked with a '3' below it. The piece concludes with a double bar line and repeat dots.

Reel Set 7 : Imelda Roland/Craig's Pipe
(The Tulla Ceili Band/A Celebration of 50 years)

Reel 8-1 Mountain Top, The(G)

3 3 3

1 2

5

3

9

3 3 3

Reel 8-2 Anderson's (D)

7

13

Reel 8-3 Greig's Pipes (G)

1 2

5

11

3 3

Reel Set 8 Mountain Top/Anderson fs/ Craig fs Pipe
(Kevin Griffin/Across the Pond)

Reel 9-1 The Maid Behind The Bar (Dmaj)

Musical notation for Reel 9-1, 'The Maid Behind The Bar' (Dmaj). The piece is in 4/4 time and D major. It consists of four staves of music. The first staff starts with a treble clef, a key signature of one sharp (F#), and a 4/4 time signature. The melody is written in a single line. The second staff begins with a measure rest labeled '5'. The third staff begins with a measure rest labeled '8'. The fourth staff begins with a measure rest labeled '12'. The piece concludes with a double bar line and repeat dots.

Reel 9-2 Bird in the Bush (Gmaj)

Musical notation for Reel 9-2, 'Bird in the Bush' (Gmaj). The piece is in 4/4 time and G major. It consists of four staves of music. The first staff starts with a treble clef, a key signature of two sharps (F# and C#), and a 4/4 time signature. The melody includes several triplet markings, indicated by a '3' over a group of three notes. The second staff begins with a measure rest labeled '5'. The third staff begins with a measure rest labeled '9'. The fourth staff begins with a measure rest labeled '13'. The piece concludes with a double bar line and repeat dots.

Reel Set 9: Maid Behind the Bar/Bird in the Bush
(Shannon Heaton/Oil For the Chain)

Reel 10-1 Last Night's Fun

Musical notation for Reel 10-1 Last Night's Fun. The piece is in D major (one sharp) and common time (C). It consists of three staves of music. The first staff begins with a repeat sign and contains the main melody. The second and third staves provide accompaniment, with the second staff starting at measure 5 and the third at measure 9. The notation includes various note values, rests, and a final double bar line.

The Reel 10-2 Abbey Reel

Musical notation for The Reel 10-2 Abbey Reel. The piece is in D major (one sharp) and common time (C). It consists of three staves of music. The first staff begins with a repeat sign and contains the main melody, which includes two first endings labeled '1' and '2'. The second and third staves provide accompaniment, with the second staff starting at measure 5 and the third at measure 9. The notation includes various note values, rests, and a final double bar line.

Reel Set 10 : Last Night fs Fun(D)/The Abbey Reel
(Mike Rafferty/Speed 78)

Reel 11-1 Devanny's Goat (D)

Musical notation for Reel 11-1 Devanny's Goat (D). The piece is in D major (one sharp) and 4/4 time. It consists of four staves of music. The first staff starts with a treble clef, a key signature of one sharp (F#), and a 4/4 time signature. The melody is written in a single line. The second staff begins with a measure rest and a measure number '5'. The third staff begins with a measure rest and a measure number '9'. The fourth staff begins with a measure rest and a measure number '13'. The piece concludes with a double bar line and repeat dots.

Reel 11-2 The Galway Rambler

Musical notation for Reel 11-2 The Galway Rambler. The piece is in D major (one sharp) and 4/4 time. It consists of four staves of music. The first staff starts with a treble clef, a key signature of one sharp (F#), and a 4/4 time signature. The melody is written in a single line. The second staff begins with a measure rest and a measure number '5'. The third staff begins with a measure rest and a measure number '9'. The fourth staff begins with a measure rest and a measure number '13'. The piece concludes with a double bar line and repeat dots. There are triplets indicated by a '3' above the notes in the first two staves.

Reel 11-3 Last Night's Fun

Musical notation for Reel 11-3 Last Night's Fun. The piece is in D major (one sharp) and common time (C). It consists of three staves of music. The first staff starts with a treble clef, a key signature of one sharp (F#), and a common time signature (C). The melody is written in a single line. The second staff begins with a measure rest and a measure number '5'. The third staff begins with a measure rest and a measure number '9'. The piece concludes with a double bar line and repeat dots. There are accents (tilde) over the notes in the second and third staves.

Reel Set 11 : Devanny fs Goat/Galway Rambler/Last Night fs Fun
(Foinn Seisiun Book3)

Reel 12-1 Christmas Eve(Gmaj)

Musical score for Reel 12-1 Christmas Eve (Gmaj) in 4/4 time. The score consists of six staves of music. The first staff begins with a repeat sign. The second staff starts with a measure number '5'. The third staff starts with a measure number '8'. The fourth staff starts with a measure number '12'. The fifth staff starts with a measure number '15'. The sixth staff starts with a measure number '19'. The music features a mix of eighth and sixteenth notes, with some measures containing triplets. The key signature is one sharp (F#).

Reel 12-2 Fermoy Lasses, The (Em)

Musical score for Reel 12-2 Fermoy Lasses, The (Em) in 4/4 time. The score consists of four staves of music. The first staff begins with a measure number '3' above a triplet of eighth notes. The second staff starts with a measure number '5'. The third staff starts with a measure number '9'. The fourth staff starts with a measure number '13'. The music features a mix of eighth and sixteenth notes, with many measures containing triplets. The key signature is one flat (Bb).

Reel 12-3 Greig's Pipes(Gmaj)

1

2

5

9

13

3

3

1

2

Reel Set 12 : Christmas Eve/The Fermoy Lasses/Craig fs Pipe
(Foinn Seisiun Book3)

Reel 13-1 George White's Favorite(Gmaj)

Musical notation for Reel 13-1, George White's Favorite (Gmaj), in 4/4 time. The piece consists of four staves of music. The first staff begins with a repeat sign and a first ending bracket. The second staff continues the melody. The third staff features a second ending bracket. The fourth staff concludes the piece with a final cadence. The key signature is one sharp (F#), and the time signature is 4/4. There are several trills and triplet markings throughout the piece.

Reel 13-2 Virginia, The(Dmaj)

Musical notation for Reel 13-2, Virginia, The (Dmaj), in 4/4 time. The piece consists of four staves of music. The first staff begins with a repeat sign and a first ending bracket. The second staff continues the melody. The third staff features a second ending bracket. The fourth staff concludes the piece with a final cadence. The key signature is two sharps (F# and C#), and the time signature is 4/4. There are several trills and triplet markings throughout the piece.

Reel 13 : George White fs Favourite/The Virginia
(Matt Molloy, Sean Keane/Contentment is Wealth)

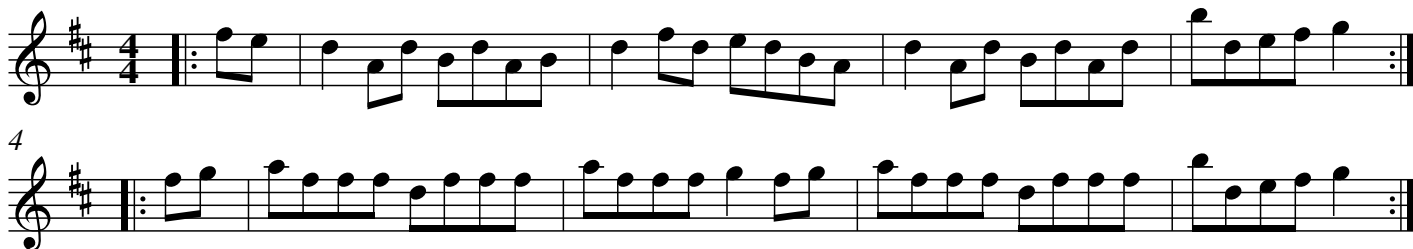
The Reel 14-1 Humours of Tulla

Reel 14-2 Saint Anne's (Dmaj)

Reel 14-3 Toss the Feathers (E Dorian)

Reel Set 14 : Humors of Tulla/St Annes Reel/Toss The Feather
 (John Mccusker/The Virtual Session BBC)

Reel 15-1 Humours Of Tulla, The (Dmaj)



Reel15-2 Skylark (Dmaj)



Reel 15-3 Roaring Mary (Dmaj)



Reel Set 15: Humor of Tulla/Sky Lark/Roaring Mary
(Joe Cooley fs/Cooley fs, Brian Rooney/Leitrim to London)

Reel 16-1 Sally Gardens (G)

Reels

Musical notation for Reel 16-1 Sally Gardens (G). The piece is in G major and common time. It consists of three staves of music. The first staff contains measures 1-6 with chords G, Bm, Em, Am, D7, and G. The second staff contains measures 7-12 with chords Bm, C, D7, G, G, Am, and D7. The third staff contains measures 13-18 with chords G, Am, Bm, C, D7, and G. The piece ends with a double bar line and repeat dots.

Reel 16-2 Miss McCloud (G)

Reels

Musical notation for Reel 16-2 Miss McCloud (G). The piece is in G major and common time. It consists of three staves of music. The first staff contains measures 1-6 with chords G, G, G, D7, G, and G. The second staff contains measures 7-12 with chords C, G, G, G, G, and D7. The third staff contains measures 13-18 with chords G, G, C, and G. The piece ends with a double bar line and repeat dots.

Reel 16-3 Foxhunter's (G)

Reels

Musical notation for Reel 16-3 Foxhunter's (G). The piece is in G major and common time. It consists of five staves of music. The first staff contains measures 1-4 with chords G, D, G, C, and D. The second staff contains measures 5-8 with chords G, D, G, C, and D. The third staff contains measures 9-12 with chords G, Am, G, Am, and D. The fourth staff contains measures 13-16 with chords G, C, G, C, and D. The fifth staff contains measures 17-20 with chords G, D, G, C, and D. The piece ends with a double bar line and repeat dots.

Reel 16–4 Bucks Of Oranmore, The (D)

The image displays a musical score for a reel set in D major and 4/4 time. It consists of ten staves of music, each beginning with a measure number: 1, 5, 9, 13, 17, 21, 25, 29, 33, and 37. The notation includes treble clefs, a key signature of two sharps (F# and C#), and a 4/4 time signature. The melody is primarily composed of eighth and sixteenth notes, with some quarter notes and rests. The score concludes with a double bar line at the end of the tenth staff.

Reel Set 16 : Sally Garden/Miss Macleod fs /The Fox Hunters/The Bucs of Oranmore
(Arcady/Many Happy Returns)

Reel 17-1 The Hare's Paw (Gmaj)

Musical notation for Reel 17-1 The Hare's Paw (Gmaj). The piece is in 4/4 time and G major. It consists of three staves of music. The first staff starts with a treble clef, a key signature of one sharp (F#), and a 4/4 time signature. The melody begins with a quarter note G4, followed by quarter notes A4, B4, and C5. The second staff starts at measure 5. The third staff starts at measure 8. There are first and second endings indicated by bracketed numbers 1 and 2 above the notes. Trills are marked with a tilde (~) over the notes. Triplets are marked with a '3' below the notes.

Reel 17-2 Knocknagow(Scotch Mary)(Ador)

Musical notation for Reel 17-2 Knocknagow(Scotch Mary)(Ador). The piece is in 4/4 time and G major. It consists of three staves of music. The first staff starts with a treble clef, a key signature of one sharp (F#), and a 4/4 time signature. The melody begins with a quarter note G4, followed by quarter notes A4, B4, and C5. The second staff starts at measure 4. The third staff starts at measure 8.

Reel 17-3 The Templehouse (Edor)

Musical notation for Reel 17-3 The Templehouse (Edor). The piece is in 4/4 time and G major. It consists of four staves of music. The first staff starts with a treble clef, a key signature of one sharp (F#), and a 4/4 time signature. The melody begins with a quarter note G4, followed by quarter notes A4, B4, and C5. The second staff starts at measure 5. The third staff starts at measure 9. The fourth staff starts at measure 13.

Reel Set 17 : The Hare fs Paw/Knocknagow(Scotch Mary)/Temple House
(Patrick Ourceau/Live at Mana)

Reel 18-1 Cooley's(Em)

Musical notation for Reel 18-1 Cooley's(Em) in 4/4 time, key of E minor. The piece consists of four staves of music. The first staff starts with a repeat sign. The second staff begins at measure 7. The third staff begins at measure 13. The fourth staff ends with a double bar line and repeat dots.

Reel 18-2 Cup Of Tea, The(Edor)

Musical notation for Reel 18-2 Cup Of Tea, The(Edor) in 4/4 time, key of E major. The piece consists of five staves of music. The first staff starts with a repeat sign. The second staff begins at measure 5. The third staff begins at measure 9. The fourth staff begins at measure 15. The fifth staff begins at measure 21 and ends with a double bar line and repeat dots.

Reel 18-3 Wise Maid, The(Dmaj)

Musical notation for Reel 18-3 Wise Maid, The(Dmaj) in 4/4 time, key of D major. The piece consists of four staves of music. The first staff starts with a repeat sign. The second staff begins at measure 5. The third staff begins at measure 8. The fourth staff begins at measure 12 and ends with a double bar line and repeat dots.

Reel Set : 18 Cooley fs(E)/The Cup of Tea iEdor j/The Wise Maid
(Tulla Ceili Band/A Celebration of 50 years)

Reel 19-1 Tarbolton, The (E Dorian)

Reel 8

Reel 19-2 Longford Collector, The (G)

Reel 8

Reel 19-3 Sailor's Bonnet, The (D)

Reel 8

Reel Set 19 :Tarbolton/Long Ford Collector/Sailor fs Bonnet
(Michael Coleman/Fiddle and Flute Master, Joe Derrane, Frankie Gavin and Brian McGrath/Ireland fs Harvest,
Shaskeen/Music for Set Dancing and Listening)

Reel 20-1 Salamanca (D)

Reels

Reel 20-2 Banshee (G)

Reels

Reel 20-3 Sailor's Bonnet, The (D)

Reel 8

Reel Set 20 : Salamanca/Banshee/Sailor fs Bonnet
(Bothy Band/Ist Album)

Reel 21-1 Miss Monaghan (D)

Musical notation for Reel 21-1 Miss Monaghan (D). The piece is in 4/4 time and D major. It consists of three staves of music. The first staff starts with a repeat sign and contains the first eight measures. The second staff starts at measure 7 and contains measures 7 through 12, featuring a triplet of eighth notes in measure 8. The third staff starts at measure 13 and contains measures 13 through 16, ending with a repeat sign.

Reel 21-2 Maid Of Feakle, The (G)

Musical notation for Reel 21-2 Maid Of Feakle, The (G). The piece is in 4/4 time and G major. It consists of three staves of music. The first staff starts with a repeat sign and contains the first eight measures. The second staff starts at measure 7 and contains measures 7 through 12, featuring a triplet of eighth notes in measure 7. The third staff starts at measure 13 and contains measures 13 through 16, ending with a repeat sign.

Reel 21-3 Whistling Postman, The (D)

Musical notation for Reel 21-3 Whistling Postman, The (D). The piece is in 4/4 time and D major. It consists of four staves of music. The first staff starts with a repeat sign and contains the first eight measures. The second staff starts at measure 7 and contains measures 7 through 12, featuring a triplet of eighth notes in measure 7 and two first endings (labeled 1 and 2) in measures 10 and 11. The third staff starts at measure 13 and contains measures 13 through 16, featuring the first ending. The fourth staff starts at measure 13 and contains measures 13 through 16, featuring the second ending.

Reel Set 21 : Miss Monaghan/Maid of Feakle/ The Whistling Postman)
(Music of Sets/Yellow Book)

Reel 22-1 Castle Kelly(Am)

Musical notation for Reel 22-1 Castle Kelly(Am). The piece is in 4/4 time and Am mode. It consists of three staves of music. The first staff begins with a repeat sign and a double bar line. The second and third staves continue the melody. The piece concludes with a double bar line and repeat dots.

Reel 22-2 Humours of Ballyconnell, The (Dmaj)

Musical notation for Reel 22-2 Humours of Ballyconnell, The (Dmaj). The piece is in 4/4 time and D major mode. It consists of three staves of music. The first staff begins with a repeat sign and a double bar line. The second and third staves continue the melody. The piece concludes with a double bar line and repeat dots. First and second endings are indicated by boxes labeled '1' and '2' above the notes.

Reel 22-3 Duke Of Leinster, The(Gmaj)

Musical notation for Reel 22-3 Duke Of Leinster, The(Gmaj). The piece is in 4/4 time and G major mode. It consists of four staves of music. The first staff begins with a repeat sign and a double bar line. The second and third staves continue the melody. The piece concludes with a double bar line and repeat dots. First and second endings are indicated by boxes labeled '1' and '2' above the notes. A triplet of eighth notes is marked with a '3' above it in the second staff.

Reel Set 22 : Castle Kerry/Humors of Ballyconnell/Duke of Leinster
(The Tulla Ceili Band /A Celebration of 50 Years)

Reel 23-1 The Eel In The Sink

Musical notation for Reel 23-1, 'The Eel In The Sink'. The piece is in 4/4 time and D major. It consists of three staves of music. The first staff contains measures 1 through 8, with a first ending (marked '1') and a second ending (marked '2') starting at measure 7. The second staff contains measures 5 through 8, with a triplet of eighth notes in measure 7. The third staff contains measures 9 through 12, with a triplet of eighth notes in measure 9 and a fermata over the final note in measure 12.

Reel 23-2 The Glen Of Aherlow(Lafferty's)(Edor)

Musical notation for Reel 23-2, 'The Glen Of Aherlow (Lafferty's) (Edor)'. The piece is in 4/4 time and D major. It consists of four staves of music. The first staff contains measures 1 through 4, with a repeat sign at the beginning. The second staff contains measures 5 through 8, with a fermata over the final note in measure 8. The third staff contains measures 8 through 11, with a repeat sign at the beginning and a fermata over the final note in measure 11. The fourth staff contains measures 12 through 15, with a fermata over the final note in measure 15.

Reel Set 23 : Eel in the Sink/Glen of Atherlow
(Seamus Creagh/Tunes for Practice)

Reel 24-1 Humours Of Castlefin, The(Em)

Musical notation for Reel 24-1 Humours Of Castlefin, The(Em). The piece is in 4/4 time and E major. It consists of four staves of music. The first staff starts with a treble clef, a key signature of one sharp (F#), and a 4/4 time signature. The melody is written in a single line. The second staff begins at measure 5. The third staff begins at measure 9. The fourth staff begins at measure 13 and ends with a double bar line.

Reel 24-2 The Glen Of Aherlow(Lafferty's)(Edor)

Musical notation for Reel 24-2 The Glen Of Aherlow(Lafferty's)(Edor). The piece is in 4/4 time and E major. It consists of four staves of music. The first staff starts with a treble clef, a key signature of one sharp (F#), and a 4/4 time signature. The melody is written in a single line. The second staff begins at measure 5. The third staff begins at measure 8. The fourth staff begins at measure 12 and ends with a double bar line. There are accents (~) over several notes in the second, third, and fourth staves.

Reel 24-3 Killarney Boys Of Pleasure(Em)

Musical notation for Reel 24-3 Killarney Boys Of Pleasure(Em). The piece is in 4/4 time and E major. It consists of four staves of music. The first staff starts with a treble clef, a key signature of one sharp (F#), and a 4/4 time signature. The melody is written in a single line. The second staff begins at measure 5. The third staff begins at measure 9. The fourth staff begins at measure 12 and ends with a double bar line and a fermata over the final note.

Reel Set 24: Humors of Castlefin/Glen of Atherlow/Killarney Boys of Pleasure
(Mary MacNamara/Traditional Music form East Clare)

Reel 25-1 Jackie Coleman's (Dmaj)

Musical notation for Reel 25-1 Jackie Coleman's (Dmaj). The piece is in D major (one sharp) and common time (C). It consists of four staves of music. The first staff begins with a treble clef, a key signature of one sharp (F#), and a common time signature (C). The melody starts with a repeat sign followed by a quarter rest, then a series of eighth and sixteenth notes. The second staff starts at measure 5 and includes two first/second endings. The third staff starts at measure 9 and continues the melody. The fourth staff starts at measure 13 and also includes two first/second endings. The piece concludes with a double bar line.

Reel-25-2 Pigtown (Em)

Musical notation for Reel-25-2 Pigtown (Em). The piece is in E minor (no sharps or flats) and common time (C). It consists of two staves of music. The first staff begins with a treble clef, a key signature of no sharps or flats, and a common time signature (C). The melody starts with a repeat sign followed by a quarter rest, then a series of eighth and sixteenth notes. The second staff starts at measure 5 and includes two first/second endings. The piece concludes with a double bar line.

Reel Set 25 : Jackie Coleman fs/The Pigtown
(Various/Music at Matt Molloy fs)

Reel 26-1 The Fox On The Prowl (Dmaj)

Musical notation for Reel 26-1, 'The Fox On The Prowl' in D major. The piece is in 4/4 time and consists of four staves of music. The first staff begins with a repeat sign. The melody features a mix of eighth and quarter notes, with some notes marked with a tilde (~). The second staff starts at measure 5, the third at measure 9, and the fourth at measure 13. The piece concludes with a double bar line and repeat dots.

Reel 26-2 The Liffey Banks (Gmaj)

Musical notation for Reel 26-2, 'The Liffey Banks' in G major. The piece is in 4/4 time and consists of four staves of music. The first staff begins with a repeat sign. The melody includes eighth notes, quarter notes, and a triplet of eighth notes. The second staff starts at measure 5 and includes first and second endings. The third staff starts at measure 9 and features two triplet markings. The fourth staff starts at measure 13 and also includes a triplet marking. The piece concludes with a double bar line and repeat dots.

Reel Set 26 : The Fox on The Prowl/The Liffey Banks
(Mike & Mary Rafferty/Road from Ballinakill)

Reel 27-1 I Have No Money (Dmaj)

Musical notation for Reel 27-1, "I Have No Money" (D major). The piece is in 4/4 time and consists of 13 measures. The notation is written on a single treble clef staff. The key signature has two sharps (F# and C#). The melody begins with a quarter note G4, followed by quarter notes A4, B4, and C#5. The piece features a mix of eighth and quarter notes, with some measures containing slurs and accents. The final measure ends with a double bar line.

Reel 27-2 The Steeplechase (Cmaj)

Musical notation for Reel 27-2, "The Steeplechase" (C major). The piece is in 4/4 time and consists of 13 measures. The notation is written on a single treble clef staff. The key signature has no sharps or flats. The melody begins with a quarter note C4, followed by quarter notes D4, E4, and F4. The piece features a mix of eighth and quarter notes, with some measures containing slurs and accents. The final measure ends with a double bar line and repeat dots. There are first and second endings indicated by brackets and numbers 1 and 2 above the notes.

Reel Set 27 : I have No Money/Steeple Chase
(Mike & Mary Rafferty/Road from Ballinakill))